

GROUP TOUR PLANNER

KANSAS CITY

KANSAS

Wyandotte County



P.O. Box 171517 · 727 Minnesota · Kansas City, KS 66117-0517

Kansas City Kansas - Wyandotte County
Convention & Visitors Bureau

www.visitthedot.com

913-321-5800 · 800-264-1563
Fax: 913-371-3732

Welcome! A Brief History

Welcome to “The Dot”

Kansas City, Kansas - Wyandotte County is a leading tourist location in the state of Kansas and the Kansas City metropolitan area. We are excited you are considering us for your next tour!

As the perfect location, we are just a short distance from several other cities. You can travel east into Kansas City, Missouri; south to Overland Park, Kansas; north to Fort Leavenworth and Atchison, Kansas and west to Lawrence and Topeka, Kansas.

The staff of the Kansas City Kansas - Wyandotte County Convention & Visitors Bureau is available to assist you with your group planning needs. We are happy to provide information on a variety of attractions, hotels, restaurants, shopping and activities. We welcome the opportunity to send you brochures, sample itineraries or general information at your request.

Whatever your needs, we will work to make your visit memorable.

BRIEF HISTORY INFORMATION

Kansas City, Kansas and Wyandotte County are located on the banks where the Kansas and Missouri rivers meet. Wyandotte County consists of three cities: Kansas City, Kansas, Bonner Springs, Kansas and Edwardsville, Kansas. Located in the heart of the Midwest, we are accessible from everywhere.

Legendary Kansans and historical figures such as Lewis and Clark are a part of our history. See the place where Lewis and Clark camped and tour The Legends at Village West to learn about Dwight Eisenhower, Amelia Earhart, Bob Dole and other great Kansans. Visit the many historical sites which make the city such an interesting place to visit and live.

Kansas Speedway, The Great Wolf Lodge, Nebraska Furniture Mart, Cabela's, The National Agricultural Center and Hall of Fame, Moon Marble and Legends Outlets Kansas City are only a few of the DOT's sites waiting to welcome you. Many national and local restaurants are located in Kansas City, Kansas for your dining experience. From Bar-B-Q to steaks, we have something for everyone. If shopping is your pleasure, we can accommodate you! From western wear to New York City runway fashions, we have it all.

As you plan for your next tour, we hope that you consider all that Kansas City, Kansas and Wyandotte County have to offer. Contact the Convention & Visitors Bureau for additional information.

Helpful Information

AIRPORT

Kansas City International (MCI)
816-243-5219 or www.flykci.com

AIRLINES SERVING KCI (MCI)

Air Canada	888-247-2262
AirTran Airways	800-247-8726
American	800-433-7300
Continental	800-523-3273
Continental Express	800-523-3273
Delta	800-221-1212
Delta Connection / Comair	800-354-9822
Delta Connection / SkyWest	800-221-1212
Frontier	800-432-1359
Midwest Airlines	800-452-2022
Northwest	800-225-2525
Southwest	800-435-9792
United	800-241-6522
US Airways	800-428-4322

TRAIN

AMTRAK- Service to Kansas City from over 500 destinations.
www.amtrak.com or 816-962-5399

LOCAL MOTOR COACH COMPANIES WITH DUMP STATIONS

STATIONS

Kincaid Coach Lines Inc.	913-441-6200
K-7 & I-435	913-634-7381 (After Hours)
Crossroad Tours	913-829-6644
1-35 & 151st	

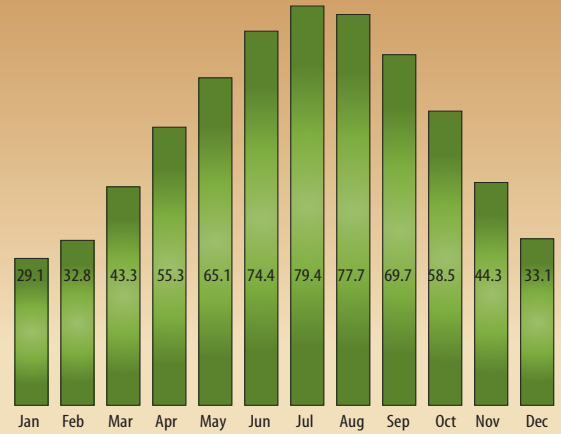
Arrow Stage Lines 800-243-7476
1/2 Mi from I-70 & US-24 (KCMO)

LOCAL BUS SERVICE

The METRO- The city's public bus system is affordable and convenient. For a complete listing of fares & routes visit www.kcata.org or call 816-346-0200 for general information.

CLIMATE

Average Temperature Highs in Kansas City



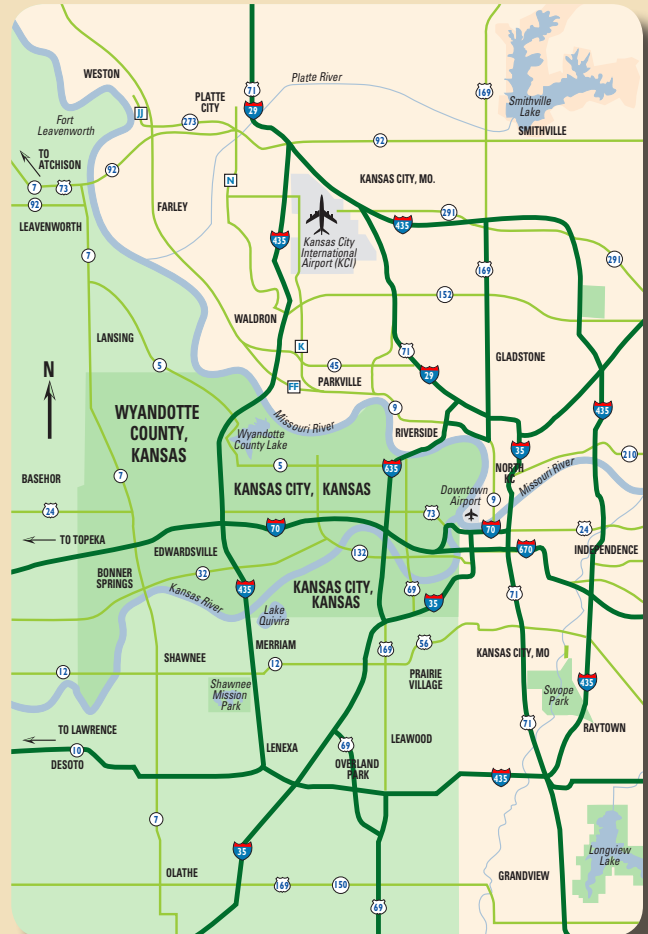
MAJOR HIGHWAYS

Interstates

East - West I-70, I-435
North - South I-29, I-35, I-435

U.S. / Kansas

East - West US-24, US-40, K-32
North - South US-69, US-169, K-7



Attractions

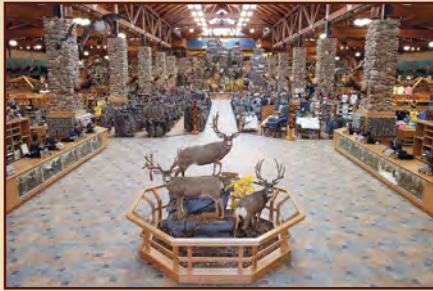
SHOPPING

CABELA'S

10300 Cabela Drive
913-328-0322
www.cabelas.com

Retail showroom is 180,000 sq. ft. of hunting, fishing and related outdoor gear store. Also includes a free 11,500 sq. ft. Mule Deer Country Museum with the world's largest collection of life size trophy mule deer in natural surroundings. Store includes laser arcade, archery, art gallery, aquarium, furniture department, gun library, restaurant, general store, bargain cave and gift shop. Guided tours by appointment. Motorcoach parking available.

Map Locator F4



MOON MARBLE COMPANY STORE

600 E. Front Street
Bonner Springs, KS
913-441-1432
www.moonmarble.com

Machine made and handmade marbles galore by various artists. Learn about glass working and marble history as you watch a marble making demonstration. Peruse the displays of antique marble toys, play marble games and visit the gift shop for unusual timeless toys. **Map Locator G5**

NEBRASKA FURNITURE MART

1601 Village West Parkway
913-288-6200
www.nfm.com

Now over 1 million sq. ft. home furnishings superstore is awesome in size, quantity and selection. Carries everything from furniture to flooring to appliances and electronics. Guided tours by appointment. **Map Locator F4**



LEGENDS OUTLETS KANSAS CITY

1843 Village West Parkway
913-788-3700
www.legendsshopping.com

This upscale-outdoor shopping center celebrates the legends of Kansas from the past and present through statues, fountains, banners and landscapes. Can be enjoyed as an audio tour and the shopping center also features scavenger hunts. Many of The Legends shops are the first or only of their kind in the Midwest. The Legends contains many shops you won't want to miss, including Ann Taylor, Old Navy, Books-A-Million, Off-Broadway Shoes and Palmers Candies and Ice Cream. **Map Locator F4**



HISTORICAL ATTRACTIONS

F.L. SCHLAGLE LIBRARY

4051 West Drive
Wyandotte County Lake Park
913-299-2384

Year-round interactive library, nature center and nature trail offer scientific, educational, cultural information and recreational opportunities to visitors of all ages. Guided tours by appointment. **Map Locator C5**

GRINTER PLACE STATE HISTORIC SITE

1420 S. 78th Street
913-299-0373

Home of Moses Grinter, one of Kansas' earliest settlers, who established the first ferry across the Kansas River. The 1857 Georgian vernacular home was built on the Delaware Indian Reserve. One of the oldest farmhouses in Kansas. Guided tours by appointment. **Map Locator I6**

HURON INDIAN CEMETERY

7th & Ann
913-721-1078

This cemetery was established in 1843 after the forced migration of the Wyandotte Nation from their homes near Upper Sandusky, Ohio. Located at a high point overlooking the meeting of the Kansas and Missouri rivers. **Map Locator G12**

LEWIS AND CLARK HISTORIC PARK AT KAW POINT

1 River City Drive
913-573-8362
www.lewisandclarkwyco.org

The Lewis and Clark Expedition arrived at Kaw Point, at the confluence of the Kansas and Missouri river in Kansas City, KS on June 26, 1804. This six acre park, which opened in 2004, features an open air education pavilion with interpretive signs about the expedition as well as an interactive computer element. Trails run through the woods and along the river. Boat ramp and docking area allow river access. **Map Locator G12**

NATIONAL AGRICULTURAL CENTER AND HALL OF FAME

630 Hall of Fame Drive
Bonner Springs, KS
913-721-1075
www.ahalloffame.com

The National Agricultural Center and Hall of Fame was created through a federal charter by an act of the 86th Congress and signed by President Dwight D. Eisenhower in 1960 to awaken people to the importance of agriculture and to help them understand and appreciate its past, present and future. The facility, in the center of America's Heartland, is dedicated to celebrating and communicating the heritage of the nation's farmers, serving as a repository of the history and tradition of American agriculture, and objectively exploring those issues which impact agriculture today and in the future. **Map Locator J1**



STRAWBERRY HILL MUSEUM AND CULTURAL CENTER

720 N. 4th Street
913-371-3264
www.strawberryhillmuseum.org

This Queen Anne style home built in 1887 hosts a museum that preserves and highlights the diverse ethnic cultures that immigrants from Eastern Europe brought to Kansas City, Kansas in the early 1900's. Beautifully decorated during the holidays. Group tours are available by appointment. **Map Locator G12**

Attractions

HISTORICAL ATTRACTIONS

WYANDOTTE COUNTY HISTORICAL SOCIETY AND MUSEUM

631 N. 126th Street
Bonner Springs, KS
913-721-1078

www.wyockck.org/museum

Houses one the nation's remaining Native American dugout canoes as well as rare 1903 American La France Steam Fire Engines. Exhibits cover Wyandotte County history from the Stone Age to the present. Group tours by appointment. Motorcoach parking available. **Map Locator F2**

SPORTS

COMMUNITYAMERICA BALLPARK

1800 Village West Parkway
913-328-2255

www.tbonesbaseball.com

The Kansas City T-Bones minor league baseball team and the Kansas City Wizards Soccer Team play at the CommunityAmerica Ballpark in Village West. Unique and fun. This is a great evening group activity. Guided tours available by appointment.

Map Locator G4



DUB'S DREAD GOLF COURSE

12601 Hollingsworth Road
913-721-1333

www.dubsdreadgolfclub.com

In a quiet country setting, just minutes from the city.

Map Locator C2

KANSAS SPEEDWAY

400 Speedway Blvd.
913-328-3300
www.kansasspeedway.com

Tour the 1.5 mile racetrack. Visit Victory Lane, garages and infield. This tour gives the behind the scenes view of racing. Popular with racing fans and those new to the sport. Group tours by appointment. **Map Locator G4**



LAKESIDE SPEEDWAY

5615 Wolcott Drive
913-299-2040
www.lakesidespeedway.net

This dirt track showcases Modifieds, Grand Nationals and Factory Stocks. National touring series hosted here for over 40 years! Racing on Friday nights – April – October, call for event schedule.

Map Locator C3

PAINTED HILLS GOLF COURSE

7101 Parallel Parkway
913-334-1111

High on a hill overlooking the city-rolling fairways lined with large trees. **Map Locator E7**

SUNFLOWER HILLS GOLF COURSE

122nd Street & Riverview Road
913-721-2727

This challenging public championship course has long par 4's and exciting par 3 holes. **Map Locator F2**

WYANDOTTE COUNTY LAKE AND PARK

91st Street & Leavenworth Road
913-573-8327

Includes 1,500 acres of wooded areas, 400-acre lake with marina, kids' fishing lake, picnic shelters and rest rooms. The largest playground in WyCo, boat rentals, fishing, abundance of wildlife, bridle trail and archery range. **Map Locator C5**

DINING & ENTERTAINMENT

7TH STREET CASINO

803 N. 7th Street
866-944-IWIN (4946)
www.wyandottecasinos.com

Over 400 Gaming machines, historic location, three bars, great food, Lucky 7 Club, promotions, tournaments and jackpots. Lucky's Steak & Chophouse – inside the 7th Street Casino – experience white-table cloth service and steaks worth savoring. Serving breakfast, lunch and dinner daily. **Map Locator F12**



BACKFIREBARBEQUEFEATURING ORANGE COUNTY CHOPPERS

1859 Village West Parkway
913-788-3838

www.backfirebarbeque.com

First in the world Backfire Barbeque is a one-of-a-kind attraction, restaurant and retail store. Features fine dining and entertainment in an interactive, multi-sensory environment complete with giant revolving motorcycle fountains, classic cars and the hottest custom choppers. Live entertainment and mouth-watering foods complete the experience.

Map Locator F4

CAPITOL FEDERAL PARK AT SANDSTONE

633 N. 130th Street
Bonner Springs, KS
866-448-7849

www.sandstoneamp.com

This open-air concert facility in Wyandotte County Park has showcased live music for more than 20 years. Beautiful setting, great acoustics for the ultimate outdoor concert experience.

Map Locator F4



Attractions

DINING & ENTERTAINMENT

CULVERS

1925 Prairie Crossing
913-400-7300

Feast on juicy butterburgers. Indulge in irresistible frozen custard. Named best burger chain in the USA. **Map Locator F4**

DAVE & BUSTER'S

1843 Village West Parkway
913-981-6815
www.daveandbusters.com

Serving up quality food in big portions in a fun, upscale atmosphere. Along with great food, Dave & Buster's also features the latest and greatest electronic interactive entertaining in its famous Million Dollar Midway with traditional games such as billiards and shuffleboard. **Map Locator F4**



FAMOUS DAVE'S BAR-B-QUE

3120 Village West Parkway
913-334-8646
www.famousdaves.com

Kansas City's award winning BBQ at its finest. A variety of flavors prepared with special attention to freshness and food quality. Group tours welcomed! **Map Locator F4**

FIVE GUYS BURGERS & FRIES

1803 Village West Parkway
913-334-4700

Five Guys is famous for one thing; their burgers. Juicy, greasy and delicious. Five Guys burgers are some of the best in the country. With an unlimited amount of toppings and the joy of watching it made right before you, there is nothing like a Five Guys burger. **Map Locator F4**

GRANNY'S CHICKEN RANCH

1340 Village West Parkway
913-788-4777
www.grannyschickenranch.com

Old-fashion pan-fried chicken just like it oughta be. Homemade cinnamon rolls, biscuits and honey butter come with every dinner, as well as salad, potatoes and green beans served family style. **Map Locator F4**

JAZZ: A LOUISIANA KITCHEN

1859 Village West Parkway
913-328-0003
www.jazzkitchen.com

An authentic French Quarter café, Jazz will bring the tastes, sights and sounds of New Orleans Offering fine Cajun Cuisine and live entertainment. **Map Locator F4**

KANSAS CITY RENAISSANCE FESTIVAL

620 N. 126th St.
Bonner Springs, KS
913-721-2110 / 800-373-0357
www.kcrenfest.com

Storybook recreation of a 16th-century English village. Live entertainment, food, fun, events in North America. Hours: 10am - 7pm weekends; Labor Day, Columbus Day, rain or shine.

Map Locator L1



THE LEGENDS 14 THEATRES

1841 Village West Parkway
913-428-2992
www.phoenixtheatres.com

Movie lovers are in for a treat at this 14-screen, state-of-the-art complex which features amenities unlike any other theatre in the midwest. The main theatre features a four-story-high screen with a VIP balcony lounge. **Map Locator F4**

LOS CABOS

1867 Village West Parkway
913-788-8770

Fiesta brings the Mexican Baja to Kansas City. Fun. Fresh. Flavorful. Specializing in the bold and distinctive flavors from the beaches of Mexico, Los Cabos features the best "tacos de pescado" in the Midwest.

Map Locator F4

PIN-UP BOWL

1859 Village West Parkway
913-788-5555
www.pinupbowl.com

A not-to-be missed hot spot bowling alley that doubles as an upscale, trendy lounge for adults only after dark. Four screens above 8 bowling lanes. A full bar offers more than 30 signature martinis with an extreme menu of pizzas, sandwiches and appetizers. **Map Locator F4**

WILD BILL'S LEGENDARY STEAKHOUSE & SALOON

1843 Village West Parkway
913-948-9898

Steakhouse combines the atmosphere of the Wild West with the personality of a Texas roadhouse. With a theme of "Cowboy-Cool Cuisine" Wild Bill's takes regional All-American dishes and adds authentic flavors out of the old west.

Map Locator F4

STANFORD & SON'S COMEDY CLUB

1867 Village West Parkway
913-400-7500
www.stanfordcomedyclub.com

One of the top-name clubs in the nation. Over the 30 years, entertainers Robin Williams, Roseanne Barr, Ellen DeGeneres, Jerry Seinfeld, Pauly Shore and Damon Williams have all performed here! **Map Locator F4**

STIX

1847 Village West Parkway
913-299-3788
www.stixdining.com

Exciting authentic pan-Asian destination restaurant, featuring cuisine from Thailand, Japan, China and more. Group seating or dining room - the choice is yours. **Map Locator F4**

T-REX CAFE

1847 Village West Parkway
913-334-8888
www.trexcafe.com

A wild place to shop, eat, explore and discover. T-Rex Cafe is a must-see attraction for all ages. Guests are treated to prehistoric adventure, including face-to-face encounters with life-size dinosaurs, geysers, ice caves, waterfall and even a dinosaur dig. **Map Locator F4**



Accommodations

There are also many small, locally owned motels in the area. For a complete list, see www.visitthedot.com or call 800-264-1563.

HOTEL/MOTEL CONTACT INFORMATION	NO. OF ROOMS	PRICE RANGE	COMP. BREAKFAST	POOL IN / OUTDOOR	LUGGAGE CHARGE	FITNESS CENTER / SPA	RESTAURANT ON SITE	HIGH-SPEED INTERNET	WYANDOTTE COUNTY MAP LOCATOR #	ACCOMMODATION FEATURES & AMENITIES
American Motel 7949 Splitlog Avenue 913-299-2999/ www.myamericaninn.com	158	\$39-\$129		0					H6	Easy access to 78th Street from I-70.
Best Western Inn & Conference Center 501 Southwest Boulevard 913-677-3060/800-368-1741 www.bwinnandconferencecenter.com	113	\$79-\$99	X	0	X	F		X	I12	Easy access to I-35, I-70 and KC's nightlife and entertainment district. Free local shuttle service within 3 miles. Adjacent to restaurants.
Candlewood Suites 10920 Parallel Parkway 913-788-9929; www.candlewoodsuites.com	98 suites	\$99-\$350				F		X	F4	Fully equipped kitchens and comfortable recliners, free use of washer and dryers, free DVD library. Adjacent to The Legends.
Chateau Avalon 701 Village West Parkway 913-596-6000/877-522-8256 www.chateauavalonhotel.com	62 suites	\$109-\$499	X		X	S		X	G4	Located across from Village West. Styled after a French chateau, luxury suites feature unique themes, two-person Chromotherapy jetted tubs and breakfast in bed. Restaurants nearby.
Comfort Inn 234 N. 78th Street 913-299-5555/ 800-228-5150 www.comfortinn.com	45	\$69-\$250	X	I		F		X	H6	Easy access to 78th Street from I-70.
Comfort Suites at the Speedway 3000 N. 103rd Terrace 1-877-424-6423/ 913-299-4466 www.comfortsuites.com	84 suites	\$99	X	I		F		X	G4	Located conveniently at the intersection of I-435 and Leavenworth Road.
Country Inn & Suites 1805 N. 110th Street 913-299-4700	117 suites	\$100-\$250	X	I	X	F		X	F4	Located in Village West adjacent to The Legends shopping center and entertainment district.
Days Inn – Kansas Speedway 7721 Elizabeth Avenue 913-334-3028; www.daysinn.com	78	\$65-\$115	X	I		F		X	G4	Easy access to I-70. Guest rooms feature microwave & mini-fridge in each suite.
Great Wolf Lodge 10401 Cabela Drive 913-299-7001/800-608-9653 www.greatwolfodge.com	281 suites	\$259-\$399		I/O	X	F/S	X	X	F4	Located in Village West. Kansas City's premier indoor waterpark resort features restaurant, spa, arcade, gift shop, banquet and meeting space.
Hampton Inn at Village West 1400 Village West Parkway 913-328-1400/ 800-HAMPTON www.kchampton.com	76	\$79-\$159	X	I		F		X	F4	Economy guest rooms include expanded continental breakfast and adjacent to many restaurants.
Hilton Garden Inn & Jack Reardon Convention Center 520 Minnesota Avenue 913-342-7900/ 800-HILTONS www.hiltongardeninn.com	147	\$69-\$129		I	X	F	X	X	H12	Located in downtown Kansas City, KS. Hotel features full-service restaurant and lounge, seamless entry to the convention center. Ideal for expos, conventions and banquets.
Holiday Inn Express 13031 Ridge Drive, Bonner Springs, KS 913-721-5300/ 800-HOLIDAY www.hiexpress.com/bonnerrsprings	63	\$84-\$149	X	I		F		X	J1	Easy access to I-70, located in Bonner Springs, KS.
Holiday Inn Express at The Legends 1931 Prairie Crossing 913-328-1024; www.hiekc.com	96	\$119	X	I	X	F		X	F4	Adjacent to Legends shopping center and entertainment district. Meeting space available. Adjacent to many restaurants.
Sun Inn 3930 Rainbow Boulevard 913-236-6880	82	\$69-\$81	X	0					G12	Sun Inn welcomes you to enjoy the continental breakfast located in the lobby. Danish, hot and cold cereals, and coffee along with other breakfast favorites await you and your group each morning.
Super 8 13041 Ridge Avenue, Bonner Springs, KS 800-800-8000/ 913-721-3877 www.super8.com	83	\$79	X	I				X	J1	Easy access to I-70. Located in Bonner Springs, KS.

Itineraries to Get You Going

FUN FOR ALL!



DAY ONE

Stop 1: Cabela's and Lunch

The Mule Deer Museum & the enormous aquarium give minds a work out with hours of edutainment.

Allow 2 hours. Next stop 10 minutes



Stop 2: Moon Marble Company Store

Discover how handmade marbles are made and play old-fashioned marble games. Shop for long-forgotten games and treasures.

Allow 1 hour. Next stop 10 minutes

Stop 3: Check into hotel



Stop 4: T-Rex Cafe

Indulge your group in the first ever built, T-Rex Cafe. Eat with the Dinosaurs in their elements, water, fire and ice.

Allow 2 hours.

Stop 5: CommunityAmerica BallPark & the Kansas City T-Bones

Enjoy KC's hometown T-Bones in action!

Allow 4 hours.



DAY TWO

Breakfast at hotel.

First stop 5 minutes

Stop 1: National Agricultural Center and Hall of Fame

An inside look at people, history and innovations of agriculture.

Allow 2 hours.

Stop 2: Legends Outlets Kansas City

The mix between upscale outlet and favorite shopping chains meet at Legends Outlets Kansas City. Excitement like Dave & Buster's or Pin Up Bowl makes the day even more exciting. End the day at your favorite restaurant or enjoy a movie at The Legends 14 Theatre.

Allow 4 hours.



Below are recommendations of additional hotels, activities and restaurants:

Great Wolf Lodge (F4)

Cabela's (F4)

Cheeseburger in Paradise (F4)

Comfort Inn (H6)

Kansas Speedway (G4)

T-Rex Cafe (F4)

Holiday Inn Express at the Legends (F4)

Moon Marble Company/Bonner Springs (G5)

Culver's (F4)

Itineraries to Get You Going

TRAVEL KANSAS



DAY ONE

Kansas City (2 Hrs): Strawberry Hill Museum and Cultural Center Tour (Breakfast)
(Kansas City to Leavenworth 35 miles)

Leavenworth (1 Hr): Ft Leavenworth & C.W. Parker Carousel Museum (Lunch)
(Leavenworth to Atchison 24 miles)

Atchison (1 1/2 Hrs): Amelia Earhart Birthplace Museum
(Atchison to Topeka 56 miles)

Check in to Hotel in Topeka

Topeka (1 Hrs): Old Prairie Town & Brick yard Barn (Dinner)



DAY TWO

Breakfast at Hotel
(Topeka to Olathe 55 miles)

Olathe (1 Hr): Mahaffie Stagecoach Stop & William Marra Museum
(Olathe to Overland Park 10 miles)

Overland Park (2 hrs): New Theater Restaurant (Lunch)
(Overland Park to Bonner Springs 10 Miles)

Bonner Springs (2 Hrs): Moon Marble Company & National Agriculture Center
and Hall of Fame

(Bonner Springs to Kansas City 19 miles)

Check in to Hotel

Kansas City (3 Hrs): Kansas Speedway, Cabela's & Legends tour (Dinner)



Below are recommendations of additional hotels, activities and restaurants:

Candlewood Suites (F4)

Dub's Dread Golf Course (C2)

Granny's Chicken Ranch (F4)

Comfort Suites at the Speedway (G4)

Nat. Ag. Center & Hall of Fame (J1)

Jazz: A Louisiana Kitchen (F4)

Holiday Inn Express at the Legends (F4)

Huron Indian Cemetery (G12)

Ted's Montana Grill (F4)

Itineraries to Get You Going

GIRLS DAY OUT!



Stop 1: Chateau Avalon Tour
Discover many worlds under one roof. This chateau is perfect for your next get-a-way when enjoying all Kansas City has to offer. Allow 1 hour. Next stop 10 minutes

Stop 2: Pin Up Bowl
An upscale martini bowling lounge awaits you for some friendly competition. Allow 1 1/2 hour. Next stop 10 minutes

Stop 3: Legends Outlets Kansas City
Upscale shopping at stores like Ann Taylor, BCBG and Off-Broadway Shoes. Don't forget to pamper yourself at Beauty Brands & the Cosmetic Store. Allow 3 Hours

Wild Bill's Legendary Steakhouse & Saloon
Enjoy great food in a western scene... or find yourself on the infamous mechanical bull. Allow 1 1/2 hours.

Stop 4: Check in to Hotel



Below are recommendations of additional hotels, activities and restaurants that women will love:

Chateau Avalon (G4)

7th Street Casino (F12)

Felitza's Fine Italian Cuisine (G12)

Nebraska Furniture Mart (F4)

Spa at Great Wolf Lodge (F4)

Stix (F4)

Holiday Inn Express at the Legends (F4)

Hampton Inn at Village West (F4)

Lucky's Steak & Chop House (F4)

Itineraries to Get You Going

FAN TOUR



Stop 1: Kansas Speedway
Tour and welcome bags from THE DOT.
Allow 1 1/2 hours. Next stop 10 minutes.



Stop 2: Cabela's & Lunch
Allow 1 1/2 hour. Next stop 10 minutes.

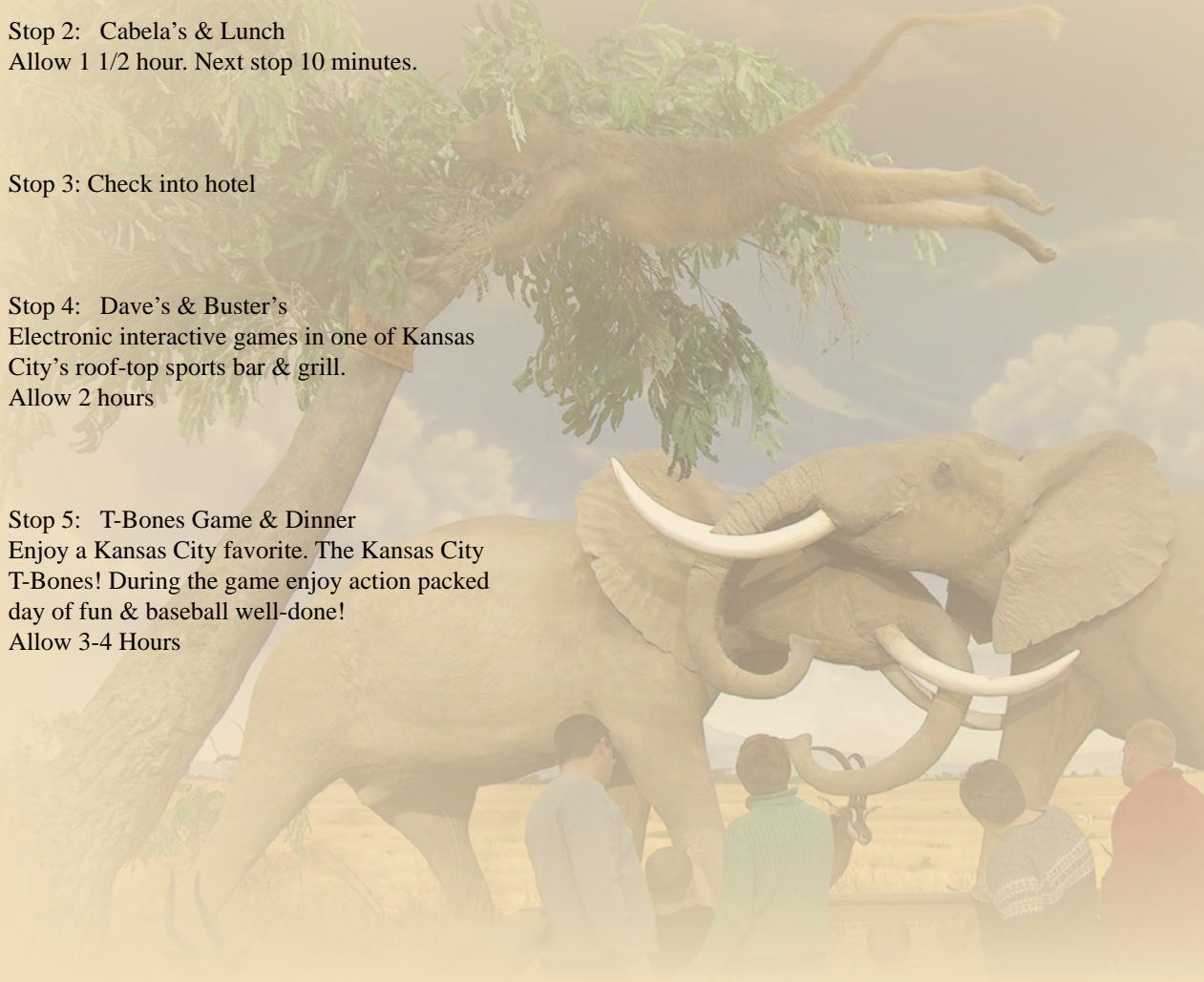


Stop 3: Check into hotel

Stop 4: Dave's & Buster's
Electronic interactive games in one of Kansas City's roof-top sports bar & grill.
Allow 2 hours



Stop 5: T-Bones Game & Dinner
Enjoy a Kansas City favorite. The Kansas City T-Bones! During the game enjoy action packed day of fun & baseball well-done!
Allow 3-4 Hours



Below are recommendations of additional hotels, activities and restaurants that sports fans will love:

Days Inn Kansas Speedway (G4)
7th Street Casino (F12)
Backfire Barbeque (F4)

Lakeside Speedway (C3)
Kansas City T-Bones (G4)
Los Cabos (F4)

Holiday Inn Express at the Legends (F4)
Hampton Inn at Village West (F4)
Lucky's Steak & Chop House (F4)

ACCOMMODATIONS

- H4 American Motel
- J1 Back in Thyme
- I12 Best Western Inn
- J1 Candlelight Cottage
- H6 Comfort Inn
- G4 Comfort Suites at The Speedway
- J1 Cottonwood RV Park
- J1 David House
- G4 Days Inn - Kansas Speedway

- H12 Hilton Garden Inn & Convention Center
- J1 Holiday Inn Express Bonner Springs
- G12 Sun Inn
- J1 Super 8
- F4 **Village West Area Hotels:**
 - Chateau Avalon
 - Candlewood Suites
 - Country Inn & Suites
 - Days Inn
 - Great Wolf Lodge
 - Holiday Inn Express at the Legends
 - Hampton Inn at Village West



ATTRACTIONS

- F12 7th Street Casino
- F4 Cabela's
- L10 Children's Museum of Kansas City
- G4 CommunityAmerica Ballpark (Kansas City T-Bones and Wizards)
- C2 Dub's Dread Golf Course
- C5 F.L. Schlagle Library
- I6 Grinter Place State Historic Site
- G12 Huron Indian Cemetery

- G4 Kansas Speedway
- C5 Korean-Vietnam War Memorial
- C3 Lakeside Speedway
- F4 Legends Outlets Kansas City
- G12 Lewis and Clark Historic Park at Kaw Point
- H12 Memorial Hall
- J1 National Agricultural Center & Hall of Fame
- F4 Nebraska Furniture Mart
- E7 Painted Hills Golf Course

- L1 Renaissance Festival
- F2 Capitol Federal Park at Sandstone
- G12 Strawberry Hill Museum and Cultural Center
- F2 Sunflower Hills Golf Course
- F4 Village West
- F2 Wyandotte County Historical Society & Museum
- C5 Wyandotte County Lake & Park